

'89 RTL250S PARTS LIST

**CONTENTS**

**INSTRUCTION FOR USE OF PARTS LIST** ..... 2- 2

**ENGINE GROUP**

E- 1 Cylinder head ..... 2- 3  
E- 2 Cylinder ..... 2- 4  
E- 3 Camshaft · Valve ..... 2- 5  
E- 4 Cam chain tensioner ..... 2- 6  
E- 5 R.crankcase cover ..... 2- 7  
E- 6 Oil pump · Oil filter ..... 2- 8  
E- 7 Clutch ..... 2- 9  
E- 8 L.crankcase cover · Generator ..... 2-10  
E- 9 Crankcase ..... 2-11  
E-10 Crankshaft · Piston ..... 2-12  
E-11 Transmission ..... 2-13  
E-12 Kick starter spindle ..... 2-14  
E-13 Shift drum · Shift fork ..... 2-15  
E-14 Carburetor ..... 2-16

**FRAME GROUP**

F- 1 Handle lever · Cable ..... 2-17  
F- 2 Handle pipe · Top bridge · Steering stem · Front fender ..... 2-18  
F- 3 Front caliper · Front master cylinder ..... 2-19  
F- 4 Front wheel · Front disk ..... 2-20  
F- 5 Front fork ..... 2-21  
F- 6 Fuel tank ..... 2-22  
F- 7 Rear caliper · Rear master cylinder ..... 2-23  
F- 8 Rear wheel ..... 2-25  
F- 9 Air cleaner ..... 2-26  
F-10 Exhaust muffler ..... 2-27  
F-11 Pedal · Kick starter arm · Step ..... 2-28  
F-12 Rear fork · Chain case ..... 2-29  
F-13 Rear cushion ..... 2-30  
F-14 Rear fender · Ignition coil · C.D.I. unit · Frame body ..... 2-31  
F-15 Speedometer · Headlight · Horn · Taillight ..... 2-32

**OPTION GROUP**

OP-1 Oil cooler ..... 2-33

**INDEX** ..... 2-34

**2**

## INSTRUCTION FOR USE OF PARTS LIST

This parts list is to be used when ordering replacement parts; it contains all parts for model '89 RTL250S.

### I. How to order parts

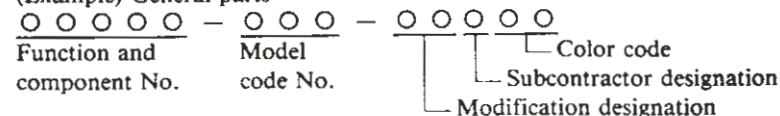
#### ● Information required

Replacement parts orders must contain both the part number and the stamped number(s) as described below. This is because any changes and modifications of parts are registered at HONDA with the pertinent parts and stamped numbers.

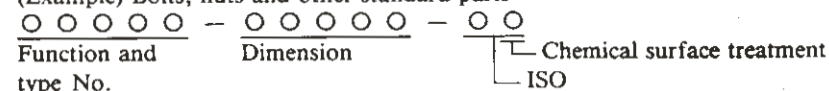
### II. How to read this parts list

#### ● Make-up of the part number

(Example) General parts



(Example) Bolts, nuts and other standard parts



#### ● Abbreviations

The following abbreviations are used in this parts list.

A.C. .... Alternating current	IN. .... Internal
ADJ. .... Adjust	L. .... Left
ADJG. .... Adjusting	L(100L). .... Link (100 Links)
ASSY. .... Assembly	LWR. .... Lower
BOTT. .... Bottom	mm .... Millimeter
BRK. .... Brake	R. .... Right
COMP. .... Complete	RUB. .... Rubber
CONN. .... Connecting	SCR. .... Screw
CUSH. .... Cushion	SPG. .... Spring
EX. .... External	SPL. .... Special
FR. .... Front	STD. .... Standard
GEN. .... Generator	T(22T). .... Tooth (22 Teeth)
HNDL. .... Handle	THROT. .... Throttle

#### ● Serial number

Frame No. RTL250SF-8910001

Note:

- The parts which have a dot “.” on the left side of the “Ref. No.” are exclusive for HRC products. To purchase these parts, consult your dealer from which you purchased your motorcycle.
- The parts which have no dot are those of the Honda products and can be purchased from your nearest Honda motorcycle dealer.

## パーツリストのご使用について

### ● 部品の注文、修理などの資料としてお使いください。

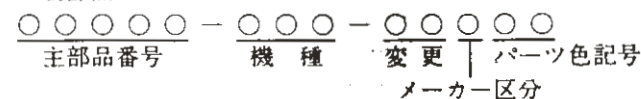
- ・販売対象部品を収録してあります。
- ・部品注文は部品番号でご連絡ください。  
(部品は変更される場合がありますのでタイプ・色・メーカー名・号機を必要に応じて一緒にご連絡ください。)
- ・使用個数に ( ) がつけられている部品はオプション部品です。
- ・使用個数が “N” と示されている部品は必要に応じて選択して使用する部品です。

### ● 部品に変更があったとき

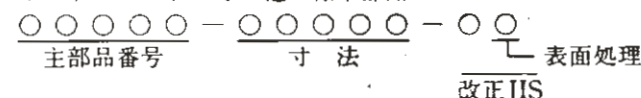
- ・Remarksに号機が記載されます。号機が記載されていない部品は初号機から使用しています。
- ・部品名欄に部品番号が記載されているものはその部品番号に統一されたことを示します。

### ● 部品番号の構成

<例> 一般部品



<例> ボルト・ナット・その他の標準部品



### ● 略語

・パーツリストには下記の略語が使用されています。

A.C. .... オルタネーティング カーレント(交流)	IN. .... インターナル
ADJ. .... アジャスト	L. .... レフト(左)
ADJG. .... アジャスティング	L(100L) .... リンク(駒数100)
ASSY. .... アセンブリ	LWR. .... ロア
BOTT. .... ボトム	mm .... ミリメートル
BRK. .... ブレーキ	R. .... ライト(右)
COMP. .... コンプリート	RUB. .... ラバー
CONN. .... コネクティング	SCR. .... スクリュー
CUSH. .... クッション	SPG. .... スプリング
EX. .... エキスターナル	SPL. .... スペシャル
FR. .... フロント	STD. .... スタンダード
GEN. .... ジェネレーター	T(22T) .... チョウ(歯数22)
HNDL. .... ハンドル	THROT. .... スロットル

### ● 打刻号機

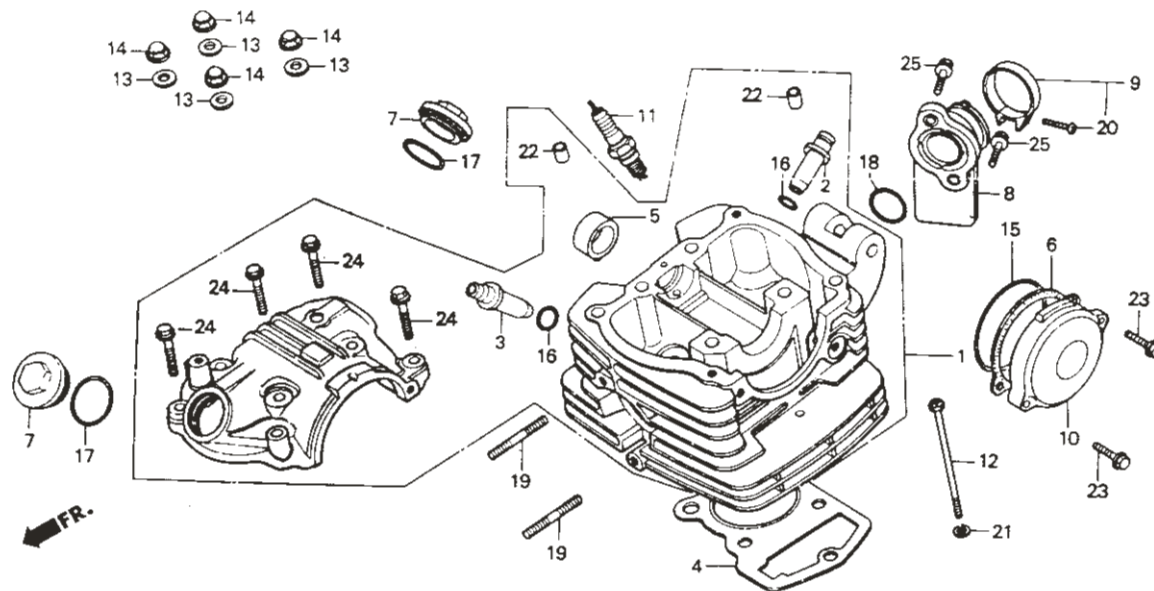
フレームNo. RTL250SF-8910001~

### ※ Ref. No. の左側に

- ・印のついている部品はHRC専用部品です。HRCサービスショップにご注文するか又は、お買い求めのHRC販売店にご相談下さい。
- ・印のついていない部品は本田技研工業(株)の量産部品を流用しています。HRCサービスショップまたは最寄りのホンダ二輪販売店でお求め下さい。

Block No.

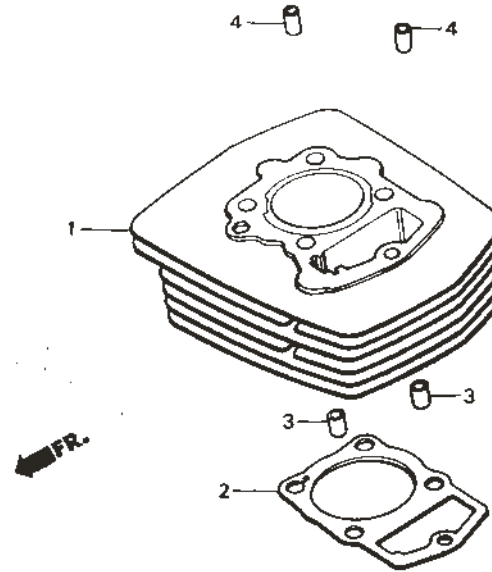
**E-1**  
Cylinder head



Ref. No.	Part No.	Description	Reqd. No.	Remarks	Ref. No.	Part No.	Description	Reqd. No.	Remarks
• 1	12000-NN0-700	HEAD ASSY., cylinder .....	1		20	93500-04020-0G	SCREW, pan, 4 x 20 .....	1	
2	12204-365-300	GUIDE, inlet valve .....	1		21	94101-06000	WASHER, plain, 6 mm .....	1	
3	12206-437-300	GUIDE, exhaust valve .....	1		22	94301-08140	PIN, dowel, 8 x 14 .....	2	
• 4	12251-ND9-000	GASKET, cylinder head .....	1		23	96001-06020-00	BOLT, flange, SH, 6 x 20 .....	2	
5	12260-437-000	BUSH COMP., cam shaft .....	1		24	96001-06035-00	BOLT, flange, SH, 6 x 35 .....	4	
6	12339-437-003	PACKING, pulse generator base .....	1		25	96700-06022-00	BOLT, socket, 6 x 22 .....	2	
7	12361-383-000	CAP, tappet adjust hole .....	2						
• 8	16211-NN0-000	INSULATOR, carburetor .....	1						
9	17256-GR0-000	BAND, air cleaner connecting tube ...	1						
10	30370-KJ2-000	COVER, pulse generator .....	1						
• 11	31920-ND9-003	SPARK PLUG (T2028-5) .....	(1)						
	98069-56717	SPARK PLUG (D6EA) .....	1						
12	90081-427-000	BOLT, 6 x 116 .....	1						
13	90442-028-000	WASHER, sealing .....	4						
14	90443-107-000	NUT, cap, 8 mm .....	4						
15	91301-107-000	O-RING, 75 x 2.5 .....	1						
16	91301-200-000	O-RING, 10 x 1.6 .....	2						
17	91303-107-000	O-RING, 3 x 35 .....	2						
18	91306-HA0-003	O-RING, 33.7 x 2.6 .....	1						
19	92900-06018-0E	BOLT, stud II, 6 x 18 .....	2						

Block No.

**E-2**  
Cylinder

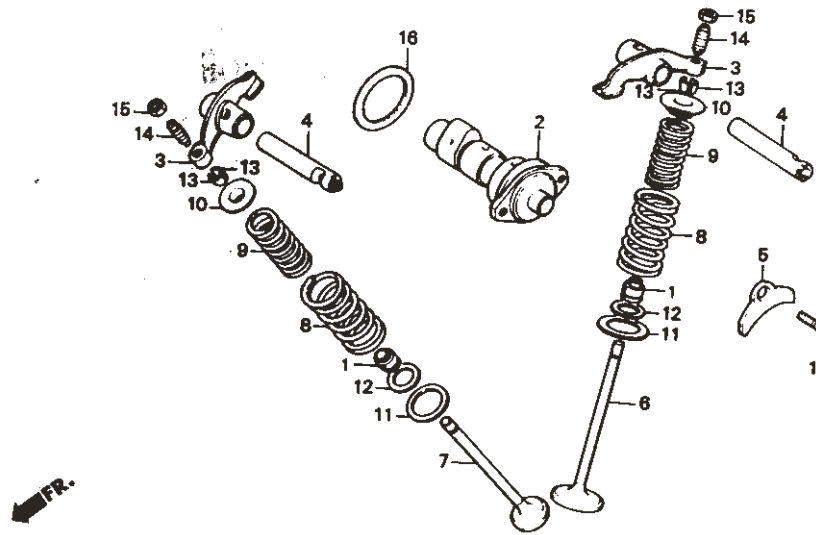


Ref. No.	Part No.	Description	Reqd. No.	Remarks	Ref. No.	Part No.	Description	Reqd. No.	Remarks
1	12100-KR9-000	CYLINDER COMP. ....	1						
2	12191-ND9-010	GASKET, cylinder ....	1						
3	90703-HC4-000	PIN, dowel, 10 x 14 ....	2						
4	94301-10200	PIN, dowel, 10 x 20 ....	2						

Block No.

**E-3**

**Camshaft • Valve**

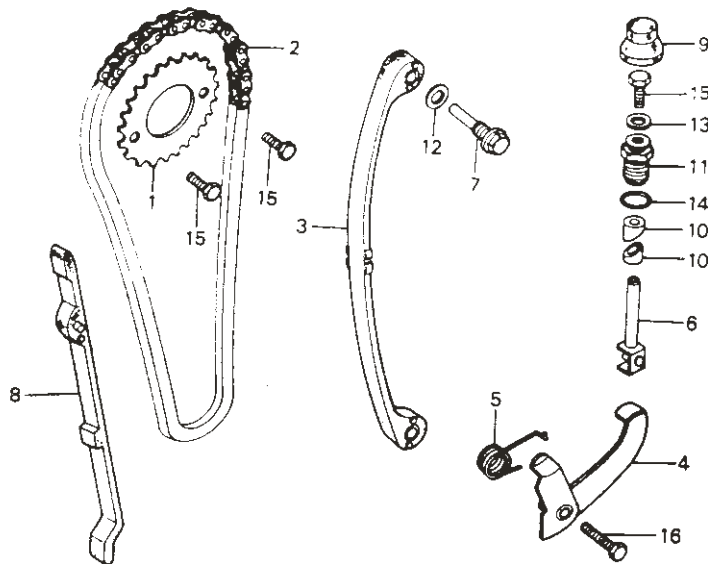


Ref. No.	Part No.	Description	Reqd. No.	Remarks	Ref. No.	Part No.	Description	Reqd. No.	Remarks
1	12208-413-003	SEAL, valve stem .....	2						
• 2	14101-ND9-000	CAM SHAFT, decomp .....	1						
3	14431-383-000	ARM, valve rocker .....	2						
4	14451-437-000	SHAFT, rocker arm .....	2						
5	14456-383-000	SET-PLATE, rocker arm shaft .....	1						
6	14711-437-000	VALVE, inlet .....	1						
7	14721-437-000	VALVE, exhaust .....	1						
8	14751-324-000	SPRING, valve outer .....	2						
9	14761-324-000	SPRING, valve inner .....	2						
10	14771-107-020	RETAINER, valve spring .....	2						
11	14775-107-000	SEAT, valve spring outer .....	2						
12	14776-107-010	SEAT, valve spring inner .....	2						
13	14781-107-003	COTTER, valve .....	4						
14	90012-426-000	SCREW, tappet adjusting .....	2						
15	90206-250-000	NUT, tappet adjusting .....	2						
16	90451-383-000	WASHER, thrust, 34 mm .....	1						
17	93600-06018	SCREW, flat, 6 x 18 .....	1						

Block No

# E-4

## Cam chain tensioner



Ref. No.	Part No.	Description	Reqd. No.	Remarks	Ref. No.	Part No.	Description	Reqd. No.	Remarks
1	14321-440-000	SPROCKET, cam (32T) .....	1						
2	14401-427-003	CHAIN, cam .....	1						
3	14500-427-000	TENSIONER, cam chain .....	1						
4	14510-383-000	ARM COMP., cam chain tensioner ...	1						
5	14515-383-000	SPRING, cam chain tensioner .....	1						
6	14520-969-010	SET BAR COMP., tensioner .....	1						
7	14535-437-000	BOLT, tensioner pivot .....	1						
8	14550-427-000	GUIDE, cam chain .....	1						
9	14564-VM3-000	CAP, tensioner adjusting .....	1						
10	14626-383-000	COLLAR, set bar lock .....	2						
11	90082-383-000	BOLT, special, 16 mm .....	1						
12	90405-KM1-000	SEAL WASHER, A. oil pipe joint ....	1						
13	90478-700-000	WASHER A, 6 mm .....	1						
14	91335-567-000	O-RING, 13 x 2.5 .....	1						
15	92101-06010-0A	BOLT, hex., 6 x 10 .....	3						
16	92101-06020-0A	BOLT, hex., 6 x 20 .....	1						

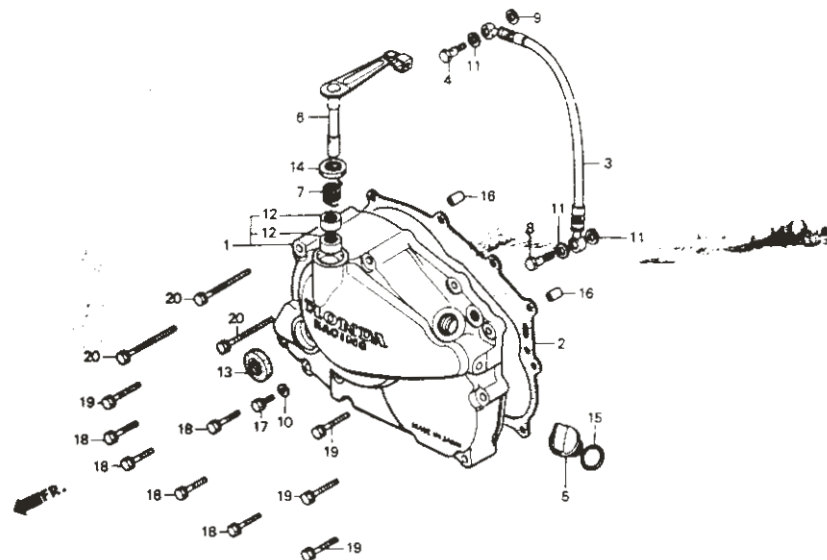
Block No.

## E-5

### R. crankcase cover

MEMO

- Engine oil quantity  
: 0.8 ltrs (at oil change)  
: 0.85 ltrs (at over haul)
- Recommended engine oil  
: HONDA 4-STROKE OIL  
or equivalent



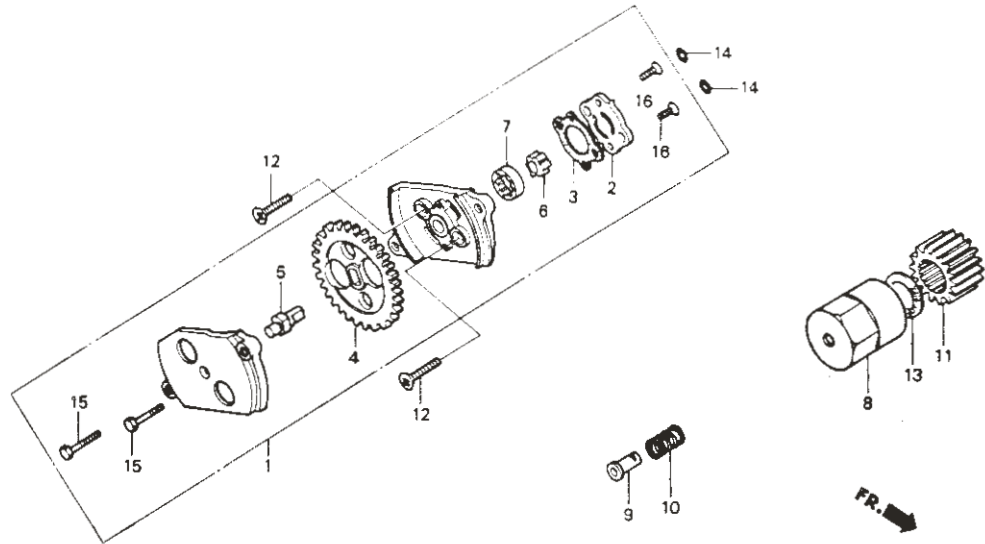
Ref. No.	Part No.	Description	Reqd. No.	Remarks	Ref. No.	Part No.	Description	Reqd. No.	Remarks
• 1	11330-NN0-000	COVER COMP., R. crankcase .....	1		19	96001-06035-00	BOLT, flange, SH, 6 x 35 .....	4	
• 2	11393-NN0-000	GASKET, R. crankcase cover .....	1		20	96001-06065-00	BOLT, flange, SH, 6 x 65 .....	3	
• 3	15520-ND9-830	PIPE COMP., oil .....	1						
• 4	15534-NN0-700	BOLT, special 8 x 24.5 .....	1						
5	15611-381-000	CAP, oil filler .....	1						
• 6	22810-ND9-830	LEVER COMP., clutch .....	1						
7	22815-KM7-700	SPRING, clutch lever .....	1						
8	90044-KM3-000	BOLT, oil, 10 mm .....	1						
9	90405-KM1-000	WASHER A, oil pipe joint seal .....	1						
10	90430-PD1-000	WASHER, sealing, 6 mm .....	1						
11	90545-300-000	WASHER, oil bolt .....	3						
12	91053-719-005	BEARING, needle, 12 x 16 x 10 .....	2						
13	91202-KK0-003	OIL SEAL, 18 x 29 x 7 .....	1						
	91202-KK0-005	OIL SEAL, 18 x 29 x 7 .....	1						
14	91204-KK0-003	OIL SEAL, 12 x 18 x 5 .....	1						
15	91303-800-000	O-RING, 16 mm .....	1						
16	94301-08140	PIN, dowel, 8 x 14 .....	2						
17	95801-06010-08	BOLT, flange, 6 x 10 .....	1						
18	96001-06022-00	BOLT, flange, SH, 6 x 22 .....	5						
19	96001-06035-00	BOLT, flange, SH, 6 x 35 .....	4						



Block No.

# E-6

## Oil pump • Oil filter

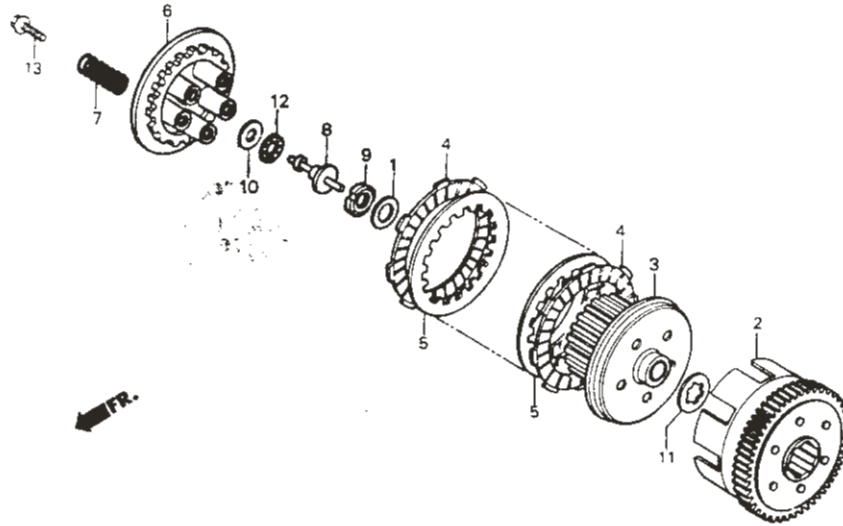


Ref. No.	Part No.	Description	Reqd. No.	Remarks	Ref. No.	Part No.	Description	Reqd. No.	Remarks
• 1	15100-NN0-700	PUMP ASSY. oil .....	1						
2	15116-107-020	PLATE, oil pump .....	1						
3	15126-107-020	GASKET, oil pump .....	1						
• 4	15131-NN0-700	GEAR, oil pump .....	1						
5	15136-383-000	SHAFT, oil pump .....	1						
6	15331-399-000	ROTOR, oil pump inner .....	1						
7	15332-399-000	ROTOR, oil pump outer .....	1						
• 8	15430-NN0-700	NUT, oil filter .....	1						
9	15445-428-000	THROUGH, oil .....	1						
10	15447-149-000	SPRING, oil through .....	1						
• 11	23121-NN0-700	GEAR, primary drive .....	1						
12	90101-440-000	SCREW, flat, 6 x 30 .....	2						
13	90432-086-000	WASHER, lock B .....	1						
14	91304-107-000	O-RING, 9.4 x 2.4 .....	2						
15	92101-05020-0H	BOLT, hex., 5 x 20 .....	2						
16	93600-04012-1A	SCREW, flat, 4 x 12 .....	2						



Block No.

**E-7**  
**Clutch**



Ref. No.	Part No.	Description	Reqd. No.	Remarks	Ref. No.	Part No.	Description	Reqd. No.	Remarks
1	15451-107-000	WASHER, lock oil filter rotor .....	1						
• 2	22100-ND9-830	OUTER, COMP., clutch .....	1						
• 3	22120-ND9-830	CENTER, COMP., clutch .....	1						
4	22201-NN0-700	DISK, clutch friction .....	5						
• 5	22311-ND9-830	PLATE, B. clutch .....	4						
6	22350-KR8-010	PLATE, clutch pressure .....	1						
7	22401-166-000	SPRING, clutch .....	5						
8	22847-KR8-000	PIN, clutch lifter .....	1						
9	90231-200-010	NUT, lock, 16 mm .....	1						
10	90459-360-000	WASHER, thrust, 12.5 mm .....	1						
11	90461-107-000	WASHER, B. spline, 20 mm .....	1						
12	91001-147-003	BEARING, needle 12 mm .....	1						
13	93404-06020-08	BOLT, washer, 6 x 20 .....	5						

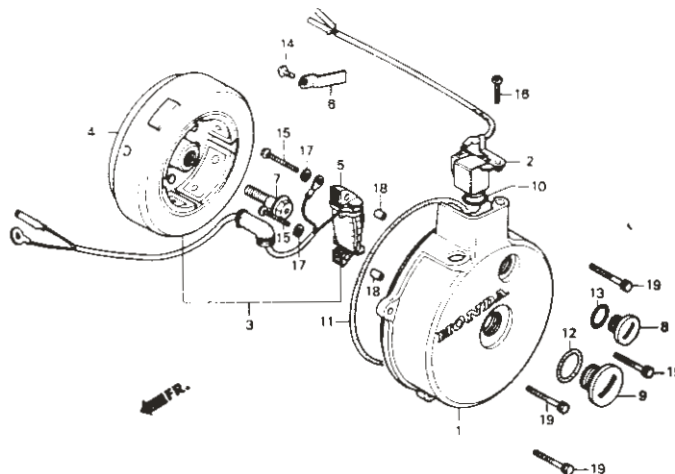
Block No.

# E-8

## L. crankcase cover • Generator

**MEMO**

- Ignition timing: 34°/2,900 rpm



Ref. No.	Part No.	Description	Reqd. No.	Remarks	Ref. No.	Part No.	Description	Reqd. No.	Remarks
• 1	11341-ND9-000	COVER, L. crankcase .....	1		19	96001-06025-00	BOLT, flange, SH, 6 x 25 .....	4	
• 2	30300-ND9-000	PULSE GEN. ASSY. ....	1						
• 3	31100-ND9-004	AC. GEN. ASSY. ....	1						
•	31100-ND9-601	AC. GEN. ASSY. ....	1	EUROPEAN SPEC.					
• 4	31110-ND9-004	FLYWHEEL COMP. ....	1						
• 5	31120-ND9-004	STATOR COMP. ....	1						
•	31120-ND9-601	STATOR COMP. ....	1	EUROPEAN SPEC.					
• 6	31125-ND9-000	CLAMPER, cord .....	1						
7	90023-KR9-000	BOLT, rotor setting .....	1						
8	90084-428-000	CAP, AC.GEN. ....	1						
9	90087-428-000	CAP, 30 mm .....	1						
10	91212-KJ2-000	O-RING, 14.8 x 2.4 .....	1						
11	91302-107-010	GASKET, L. crankcase cover .....	1						
12	91302-567-003	O-RING, 27.4 x 2.4 .....	1						
13	91303-377-000	O-RING, 13.8 x 2.5 .....	1						
14	93500-04010-0H	SCREW, pan, 4 x 10 .....	1						
15	93500-04025-0H	SCREW, pan, 4 x 25 .....	2	EUROPEAN SPEC.(4)					
16	93500-05016-0A	SCREW, pan, 5 x 16 .....	1						
17	94111-04800	WASHER, spring, 4 mm .....	3	EUROPEAN SPEC.(4)					
18	94301-06100	PIN, dowel 6 x 10 .....	2	EUROPEAN SPEC.(4)					